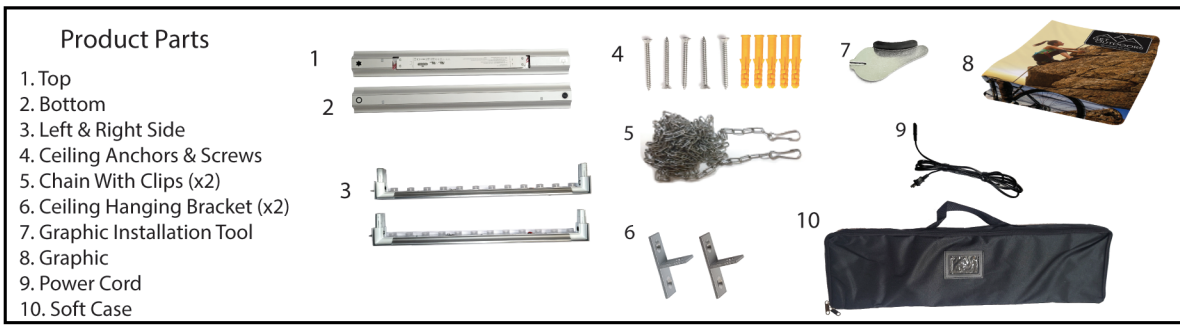


Aerial Glo SEG Display



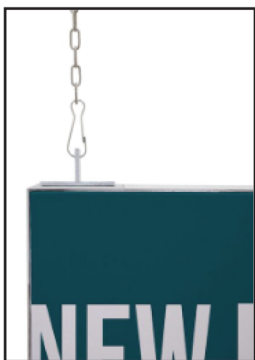
Step 1

Assemble Top (1) and Bottom (2) to Left and Right Side (3) by matching the stickers located on the frame.



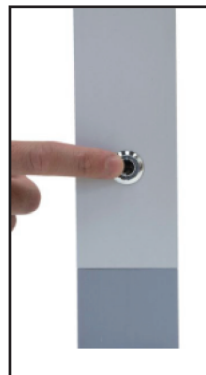
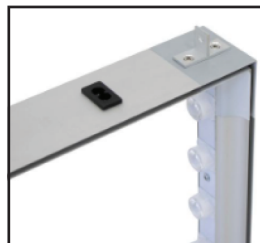
Step 3

Attach Chain with Clips (5) to the hanging mechanisms on the top of the frame.



Step 4

Plug Power Cord (9) into the hub located on the top of the frame. To turn Display on or off press button located on the side of the frame.



Step 2

With hanging mechanisms on top, install Graphic Panels (8) into frame, inserting the graphic's gasket edges into the frame, by inserting each corner into the frames four corners, then work around the frame alternating opposite sides until complete. Loop for removing Graphics (8) will be at bottom corner.

Insert stitched side of the gasket first



To remove the graphics, pull the loop found on the corner.



Step 5

Use Ceiling Anchors & Screws (4), and Ceiling Hanging Brackets (6), to hang display in your desired location and plug into electrical outlet.



Storage & Care

Place all product parts into Carry Case and store in a cool dry location. To clean non-graphic hardware, wipe with a damp cloth.